

FilmArray™ Meningitis/Encephalitis Panel

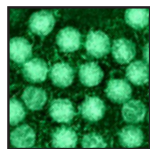
Currently in Development

1 Test. 16 Targets. All in about an hour.



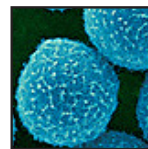
Bacteria

Escherichia coli K1
Haemophilus influenzae
Listeria monocytogenes
Neisseria meningitidis
Streptococcus agalactiae
Streptococcus pneumoniae



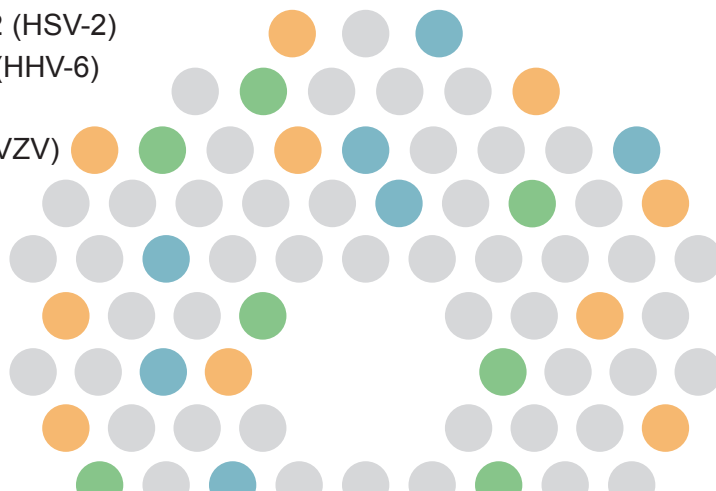
Viruses

Cytomegalovirus (CMV)
Enterovirus
Epstein-Barr virus (EBV)
Herpes simplex virus 1 (HSV-1)
Herpes simplex virus 2 (HSV-2)
Human herpesvirus 6 (HHV-6)
Human parechovirus
Varicella zoster virus (VZV)



Yeast

Cryptococcus gattii
Cryptococcus neoformans



16
Targets

Comprehensive Panel of 16 Targets

The FilmArray Meningitis/Encephalitis (ME) Panel tests cerebrospinal fluid (CSF) for a variety of pathogens including bacteria, viruses, and yeast. The integrated FilmArray system yields sample to results in about an hour, with only 2 minutes of hands-on time.

- **Simple:** 2 minutes of hands-on time
- **Easy:** No precise measuring or pipetting required
- **Fast:** Turnaround time of about 1 hour
- **Comprehensive:** 16 bacterial, viral, and yeast targets



If you are interested in a free, no obligation demonstration of the FilmArray in your laboratory visit www.filmarray.com or call 1-800-735-6544.

**FREE
Demo!**

FilmArray™

The fastest way to better results.

Panel Specifications

Sample Requirements

- Sample Type: Cerebrospinal Fluid (CSF)
- Sample Volume: 200 µL

Performance Parameters

- Hands-on time: Approx. 2 minutes
- Run turnaround time: About 1 hour

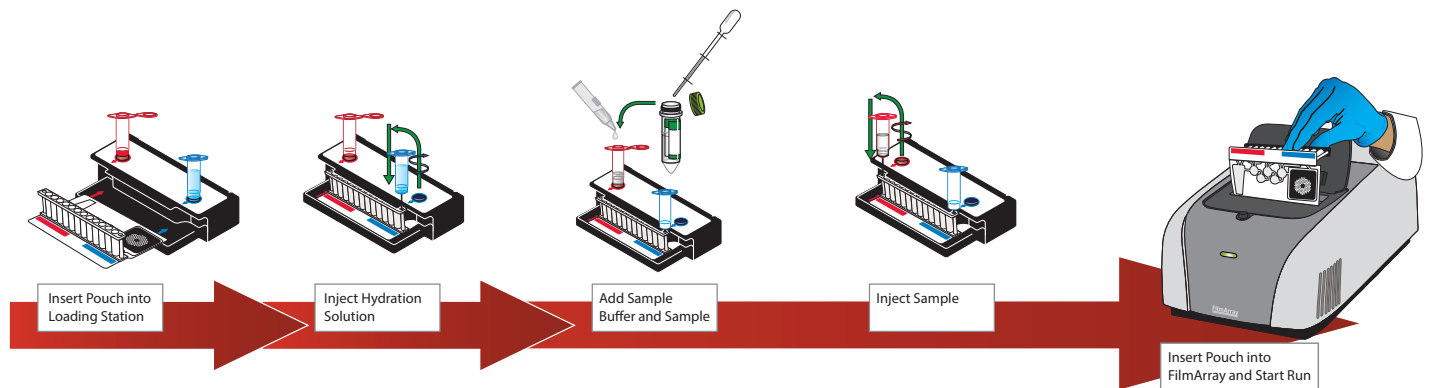
How Does the FilmArray Work?

The FilmArray reagent pouch stores all the necessary reagents for sample preparation, reverse transcription, PCR and detection in a freeze-dried format. Prior to a run, the user injects hydration solution and sample combined with sample buffer into the pouch. The FilmArray instrument does the rest.

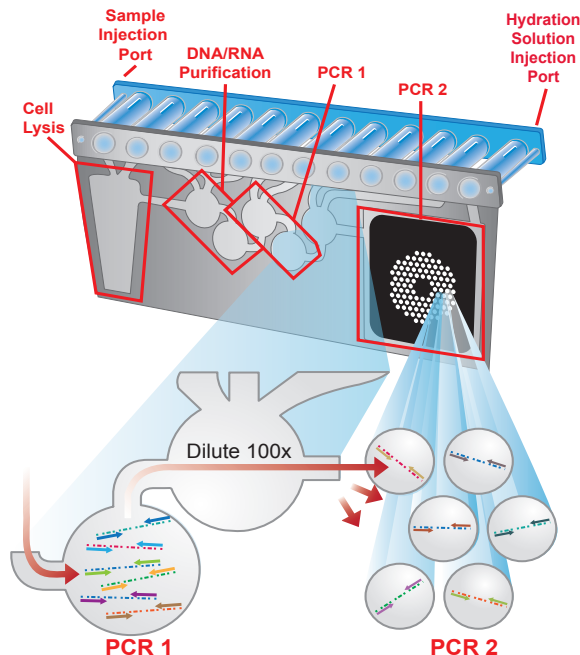
First, the FilmArray extracts and purifies all nucleic acids from the sample. Next, the FilmArray performs a nested multiplex PCR. During the first-stage PCR, the FilmArray performs a single, large volume, massively multiplexed reaction. Last, individual singleplex second-stage PCR reactions detect the products from the first stage PCR.

Using endpoint melting curve data, the FilmArray software automatically generates a result for each target in a single report.

Setting up the FilmArray is Easy – Sample in, Results out



The FilmArray Pouch and Analysis Report



FilmArray® Meningitis / Encephalitis (ME) Panel		BIO FIRE	
		www.BioFireDx.com	
Run Summary			
Sample ID:	0417_137	Run Date:	21 Apr 2014 5:34 PM
Detected:	Epstein-Barr virus Varicella zoster virus	Controls:	Passed
<p>WARNING: The FilmArray ME panel does not distinguish between latent and active herpesvirus infections (e.g., CMV, EBV, HHV6). Herpesvirus results should be used in conjunction with other clinical, laboratory, and epidemiological data.</p>			
Result Summary			
Bacteria			
Not Detected	<i>Escherichia coli</i> K1		
Not Detected	<i>Haemophilus influenzae</i>		
Not Detected	<i>Listeria monocytogenes</i>		
Not Detected	<i>Neisseria meningitidis</i>		
Not Detected	<i>Streptococcus agalactiae</i>		
Not Detected	<i>Streptococcus pneumoniae</i>		
Viruses			
Not Detected	Cytomegalovirus		
Not Detected	Enterovirus		
✓ Detected	Epstein-Barr virus		
Not Detected	Herpes simplex virus 1		
Not Detected	Herpes simplex virus 2		
Not Detected	Human herpesvirus 6		
Not Detected	Human parechovirus		
✓ Detected	Varicella zoster virus		
Yeast			
Not Detected	<i>Cryptococcus neoformans/gattii</i>		
Run Details			
Pouch:	ME Panel v1.4	Protocol:	CSF v2.0
Run Status:	Completed	Operator:	Ashley Hunter (ah)
Serial No.:	01422247	Instrument:	ITI FA "FA2430"
Lot No.:	140411A		

The purchase of FilmArray System includes a limited, non-transferable license under U.S. Patent No. 5,871,908, owned by Evotec Biosystems GmbH and licensed to Roche Diagnostics GmbH, to use only the enclosed amount of product according to the specified protocols. No right is conveyed, expressly, by implication, or by estoppel, to use any instrument or system under any claim of U.S. Patent No. 5,871,908, other than for the amount of product contained herein.

The information contained in this document is subject to change without notice. No part of this document may be reproduced or transmitted in any form or by any means, electronic or mechanical, for any purpose, without the express written permission of BioFire Diagnostics, LLC. FilmAr-

ray Software, Detector, and Metacell software modules © 2002–2014 BioFire Diagnostics, LLC. BioFire Diagnostics, BioFire, the BioFire logo, FilmArray and LCGreen are trademarks of BioFire Diagnostics, LLC or BioFire Defense, LLC and are registered trademarks of BioFire Diagnostics, LLC or BioFire Defense, LLC in the United States. All other names of products and brands appearing in this manual are trademarks or registered trademarks of their respective owners.

The purchase of this product includes a limited, nontransferable license under specific claims of one or more U.S. patents as listed on BioFire Diagnostics' Web site (<http://www.biofiredx.com/LegalNotices/>) and owned by BioFire and the University of Utah Research Foundation.